

How to create the lyrics of your song





Write the
lyrics
of your song



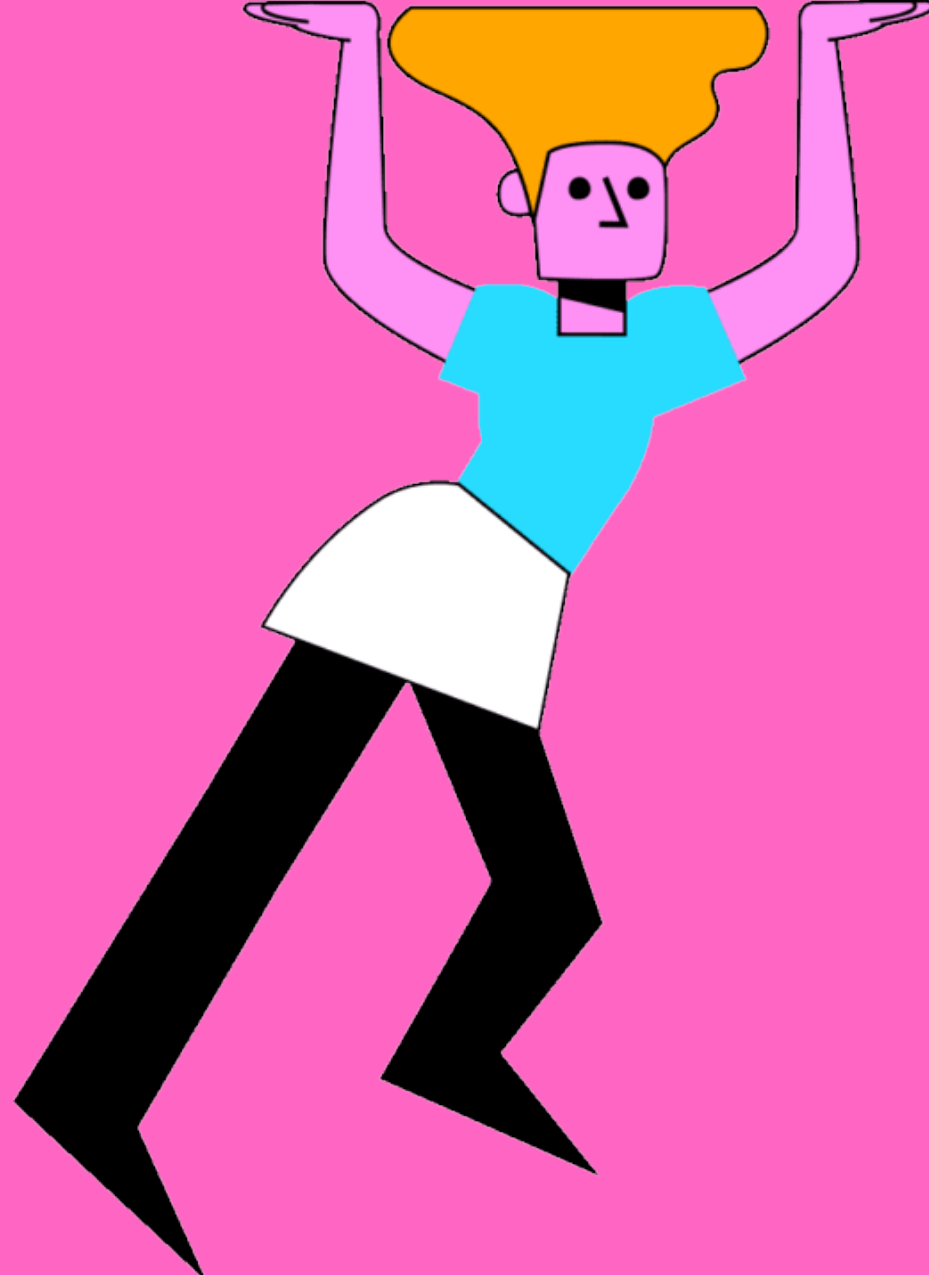


INTRO

This part is a musical introduction to the song.

VERSE 1





CHORUS



VERSE 2

Four horizontal dashed lines for writing lyrics, contained within a light pink, irregularly shaped background area.





chorus 2

BRIDGE





CHORUS 5

Handwriting practice area with five sets of horizontal lines (top solid, middle dashed, bottom solid) on a white background.



OUTRO

This is the
musical end of
the song.





R **E** **A**
ANDALUCÍA
RECURSOS **EDUCATIVOS** ABIERTOS



UNIÓN EUROPEA
Fondos Europeo de Desarrollo Regional



**Junta
de Andalucía**

Consejería de Educación
y Deporte